

# Product data sheet

Specifications



Main lugs unit, EZ Meter-Pak,  
400A, 120/240VAC, 1ph/3W, 800A  
bus, OH/UG, Type 3R

EZM1400TB

Product availability: Stock - Normally stocked in distribution facility

Price\*: 915.00 USD

## Main

Range of Product	EZ meter-pak
Product or Component Type	Meter center main unit
Main type	Main Lugs
Included Items	Closing plate

## Complementary

Main rated current	400 A
Bus rated current	800 A
Enclosure Material	Painted steel
[Ue] rated operational voltage	120/240 V AC
Device mounting	Surface
Number of Phases	1 phase in 1 phase out
Service feed location	OH UG
Electrical connection	Lugs 1 AWG 6...300 kcmil aluminium/copper) ground Lugs 2 AWG 3/0...500 kcmil aluminium/copper) line Lugs 2 AWG 3/0...500 kcmil aluminium/copper) neutral
Wiring configuration	3-wire
Height	30.46 in (773.68 mm)
Width	17.00 in (431.80 mm)
Depth	6.53 in (165.86 mm)

## Environment

Product Certifications	UL Listed
Enclosure Rating	NEMA 3R

## Ordering and shipping details

Category	US10DE400020
Discount Schedule	0DE4
GTIN	785901304852
Returnability	Yes

Price is "List Price" and may be subject to a trade discount – check with your local distributor or retailer for actual price.

Disclaimer: This documentation is not intended as a substitute for and is not to be used for determining suitability or reliability of these products for specific user applications

Country of origin	MX
-------------------	----

## Packing Units

Unit Type of Package 1	PCE
Number of Units in Package 1	1
Package 1 Height	8.20 in (20.828 cm)
Package 1 Width	21.00 in (53.34 cm)
Package 1 Length	31.50 in (80.01 cm)
Package 1 Weight	43.001 lb(US) (19.505 kg)

## Contractual warranty

Warranty	18 months
----------	-----------

# Environmental Data

Schneider Electric aims to achieve Net Zero status by 2050 through supply chain partnerships, lower impact materials, and circularity via our ongoing “Use Better, Use Longer, Use Again” campaign to extend product lifetimes and recyclability.

[Environmental Data explained >](#)

[How we assess product sustainability >](#)

## Environmental footprint

Carbon footprint (kg CO2 eq, Total Life cycle)	607
--	-----

Environmental Disclosure	<a href="#">Product Environmental Profile</a>
--------------------------	---

## Use Better

### Materials and Substances

Packaging made with recycled cardboard	No
--	----

Packaging without single use plastic	No
--------------------------------------	----

EU RoHS Directive	Compliant with Exemptions
-------------------	---------------------------

REACH Regulation	<a href="#">REACH Declaration</a>
------------------	-----------------------------------

California proposition 65	<b>WARNING:</b> This product can expose you to chemicals including: Lead and lead compounds, which is known to the State of California to cause cancer and birth defects or other reproductive harm. For more information go to <a href="http://www.P65Warnings.ca.gov">www.P65Warnings.ca.gov</a>
---------------------------	--

## Use Again



**Repack and remanufacture**

Circularity Profile

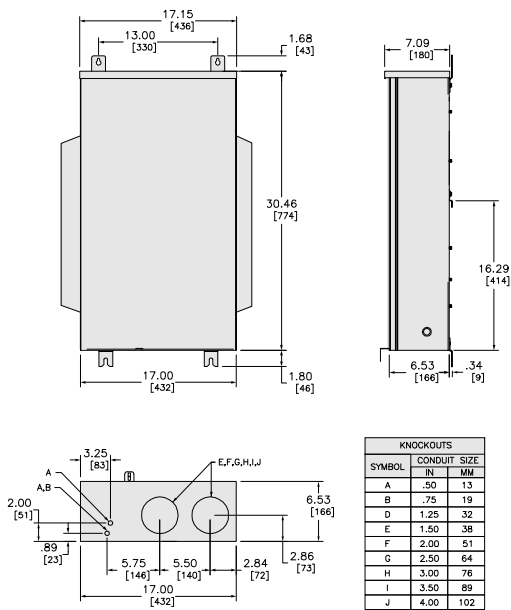
**No need of specific recycling operations**

Take-back

**No**

Technical Illustration

Dimensions

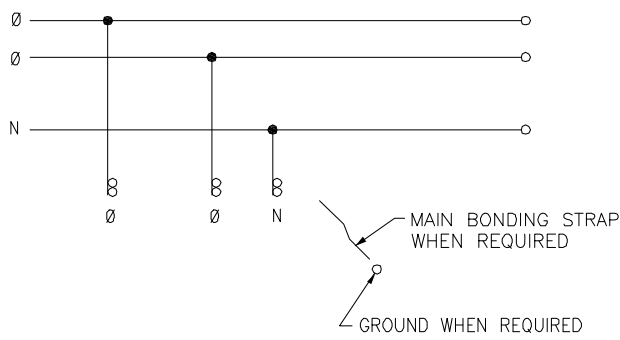


ALL DIMENSIONS ARE APPROXIMATE.  
REFER TO TECHNICAL DRAWINGS AND DOCUMENTATION FOR COMPLETE INFORMATION.

Technical Illustration

Wiring diagram

---



REFER TO TECHNICAL DRAWINGS AND DOCUMENTATION FOR COMPLETE INFORMATION.